

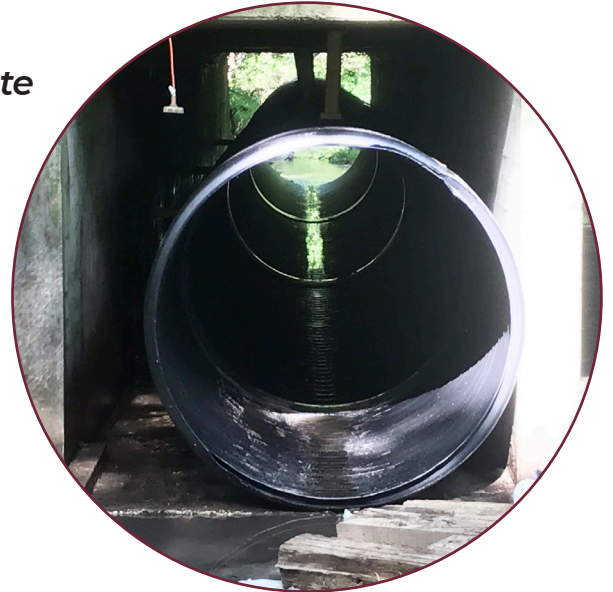


Sliplining with Kanapipe™

An efficient and economical method to rehabilitate aging culvert infrastructures. Kanapipe™ is lightweight, easy to install, and offers the best performing joint in the industry.

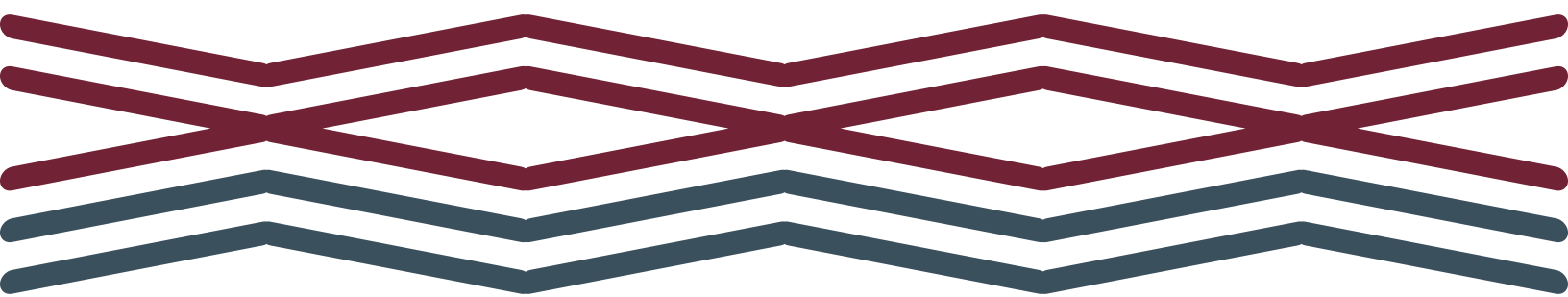
Kanapipe™ Slipline Advantages

- Manning Coefficient of 0.010-0.012, rehabilitate your old concrete or corrugated steel culverts without sacrificing capacity
- No traffic interruption needed since you don't excavate the roadway
- No costly by-pass operations as installation can proceed even with normal flow in culvert
- Exceeds joint tightness requirements of ASTM D3212
- Available in 40 feet lengths to reduce number of joints under pavement



kanaflexcorp.com

847.634.6100





HEADQUARTERS

800 Woodlands Parkway
Vernon Hills, IL 60061
847.634.6100
FAX: 847.634.6249

PIPE PLANT

875 Woodlands Pkwy
Vernon Hills, IL 60061
847.276.2235

kanaflexcorp.com

The applications presented in this document are described with the sole purpose of allowing the readers to make their own evaluations and decisions. Kanaflex makes no guarantees nor warranties of suitability for any application. It is the responsibility of the project's design engineer to ensure that all selected materials for the project are fit for the specific application. Kanaflex makes no warranty whatsoever, express, or implied, related to the applications, materials, coatings, or products discussed herein.